



John Lennon and Yoko Ono visiting Japan

“From Liverpool to Tokyo
What a way to go
From distant lands
one woman one man
Let the four winds blow”

You Are Here, John Lennon

PORTER'S NOTEBOOK...

Tokyo Diaries

FOLLOWING IN THE FOOTSTEPS OF

JOHN LENNON AND YOKO ONO, 1971

John Lennon wrote the lyrics of his love song *You Are Here* to Yoko Ono following a trip they took together to Tokyo in 1971, the year after the breakup of the Beatles. It was here that Yoko introduced Lennon to the Japanese spiritual practice of making wishes by writing a message on a piece of paper or wood and hanging it on a tree at a Shinto shrine or Buddhist temple, which later became a trademark of Ono's work. They explored the city's ancient temples, including the Yasukuni Shrine, pictured here, to pay homage to Japan's fallen warriors. To escape the concrete bustle of downtown Tokyo, they would drift around the gardens of the Imperial Palace, while visiting the city's much-loved Palace Hotel Tokyo (then called Hotel Teito). Totally rebuilt in the past decade, it has all the amenities you would expect from a large inner city hotel – impeccable service, great comfort, an Evian spa, a range of restaurants and bars and giant loft-style rooms with balconies where you can stage your own 'bed-in'. palacehoteltokyo.com

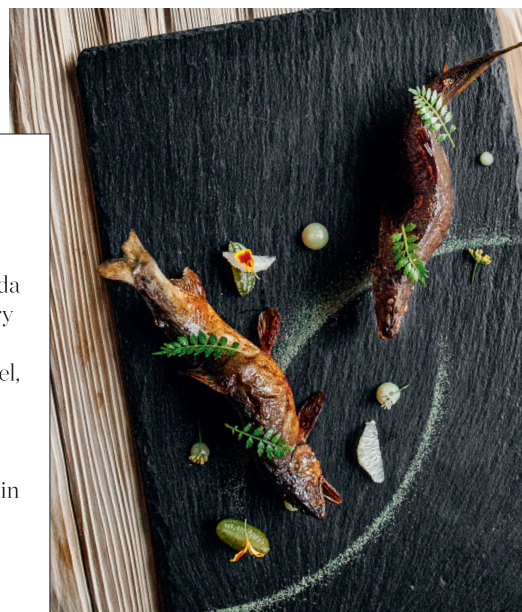


TRUNK CALL
Tokyo's new
boutique hotel
offers a calm
haven from the
buzz of the city

Need to Know

HOSHINOYA, TOKYO

Award-winning chef Noriyuki Hamada brings French flair to ancient culinary Japanese wisdom at this sublime restaurant in Tokyo's first ryokan hotel, which recreates Zen-like, rural tranquility in a metropolitan tower. The dishes – from red tilefish and turnips to seabream tartare – served in the restaurant's low-slung, earthy surroundings, are a gastronomic experience involving all the senses. hoshinoyatokyo.com



out of this world

The energy in Tokyo is like nowhere else on earth. The people have a keen sense of curiosity, so things are constantly evolving, which means you never get bored.

One of the most luxurious aspects of Tokyo is its hotels – hospitality is of the utmost importance in Japan. Every year I have a staycation in the city at The Ritz-Carlton in Roppongi (ritzcarlton.com), which is housed in the tallest building in Tokyo. There is also the beautiful, sleek Aman Tokyo (amantokyo.com), which sits on the top six floors of the Otemachi Tower.

One of my favorite ways to begin any day is to have a meditative moment in the beautiful grounds of Kyu Asakura, a traditional house built in 1919 hidden among the busy streets of Daikanyama. At dusk, I like to head to the terrace of Saturdays Surf NYC in Daikanyama, where you can see the whole of this chaotic city lit up in front of you.

MY TRAVELING LIFE

YOSHIKO KRIS WEBB

The Tokyo-raised model shares her highlights of the capital – and the mountain onsen retreats that wash away city stress

Bathing in Japan is an obsession. We believe nirvana happens at 108°F or above. Visiting onsen is a purification tradition with roots in Buddhism and Shinto that goes back over a century. The spa ritual can be experienced in private cedar tubs in a hotel suite or in public bathhouses and even in the middle of a forest. I go to a couple of spa towns to decompress from Tokyo, both a short train ride away in Kusatsu in Gunma Prefecture. My favorite is the Kaichoro Ryokan (kaichoro.jp). Set high up in the misty hills, each room has its own private onsen overlooking the spectacular mountains, and the French Kaiseki dinners are divine. *Remote Lands can organize a host of unique Tokyo experiences and private tours; remotelands.com*

PORTER loves



Ultimate
Regenerating
Serum by
Shisiedo, \$225, at
Net-A-Porter.com



Bambou
Pouch by
Elizabeth
Scarlett, \$26



Cleansing Oil
Shampoo
by Shu
Uemura, \$57



For Yoshiko Kris Webb,
the traditional Japanese
ritual of onsen is a rare
opportunity to decompress

Words by Delfina Kirono, Catherine Fairweather, Natasha Beeston.
Photographs Ken Kochey, AP/REX/Shutterstock, Kozo Takayama.

Trunk, Tokyo's hippest new boutique hotel, is perfectly located in a pretty side street hidden between the neon jungle of Shibuya and the flashy shopping street of Omotesando. Using organic, recycled and locally sourced products, this little hotel of only 15 meticulously designed rooms has big ambitions and a social conscience. The lobby is designed to be a magnet for the young Apple Mac brigade who drop in to drink coffee or local craft beer, hang out in the pop-up shop or eat dumplings from one of the hotel's two charming restaurants. The garden terrace is an oasis of calm – there's even a rooftop chapel where you may glimpse a bride among the foliage. *From \$260; trunk-hotel.com*